

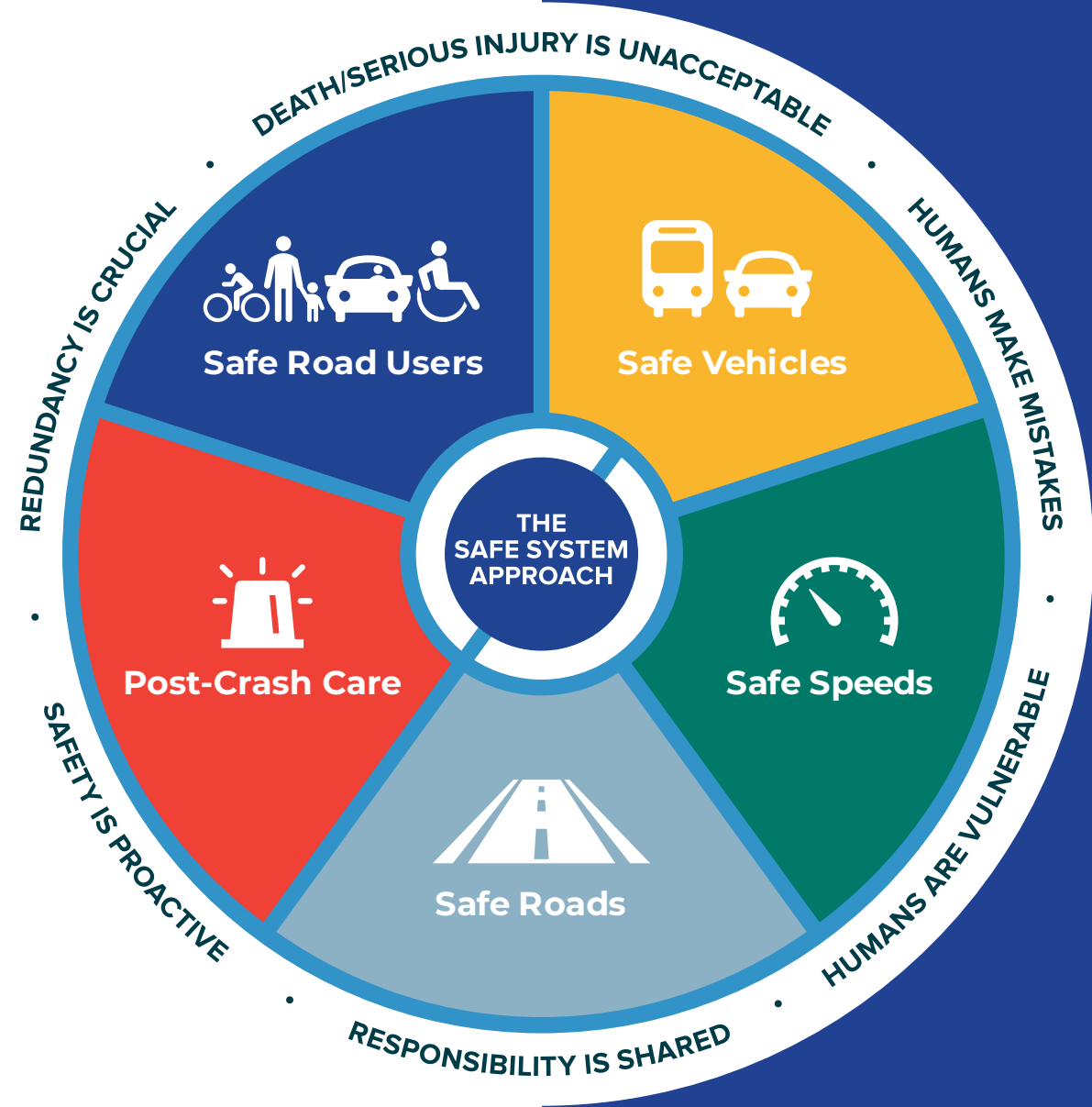


# Safe System | Urban & Rural Solutions

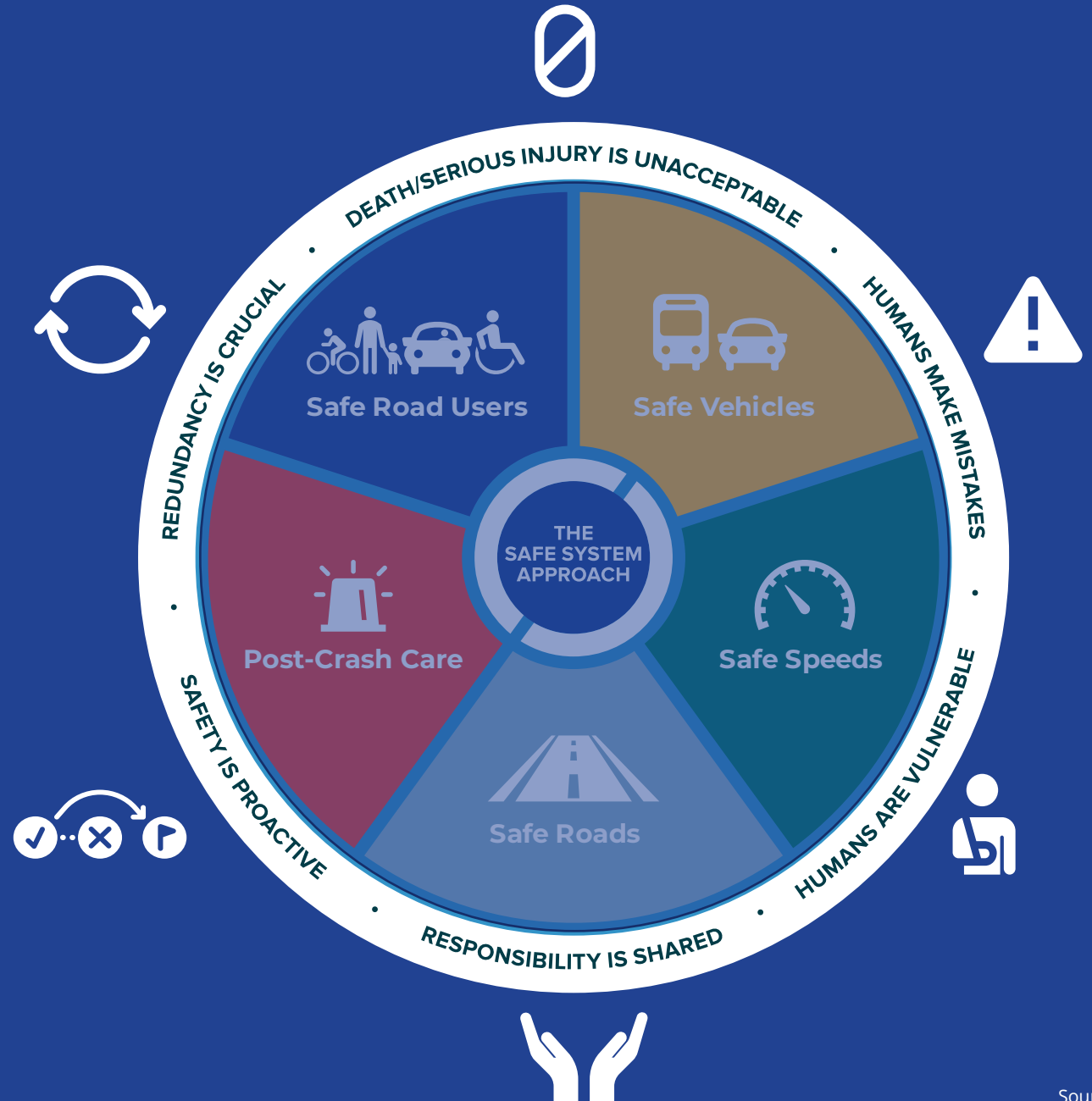
---

Amy Kaminski, FHWA  
Jeevanjot Singh, NJDOT

# The Safe System Approach



# The 6 Safe System Principles



# Death/Serious Injury is Unacceptable

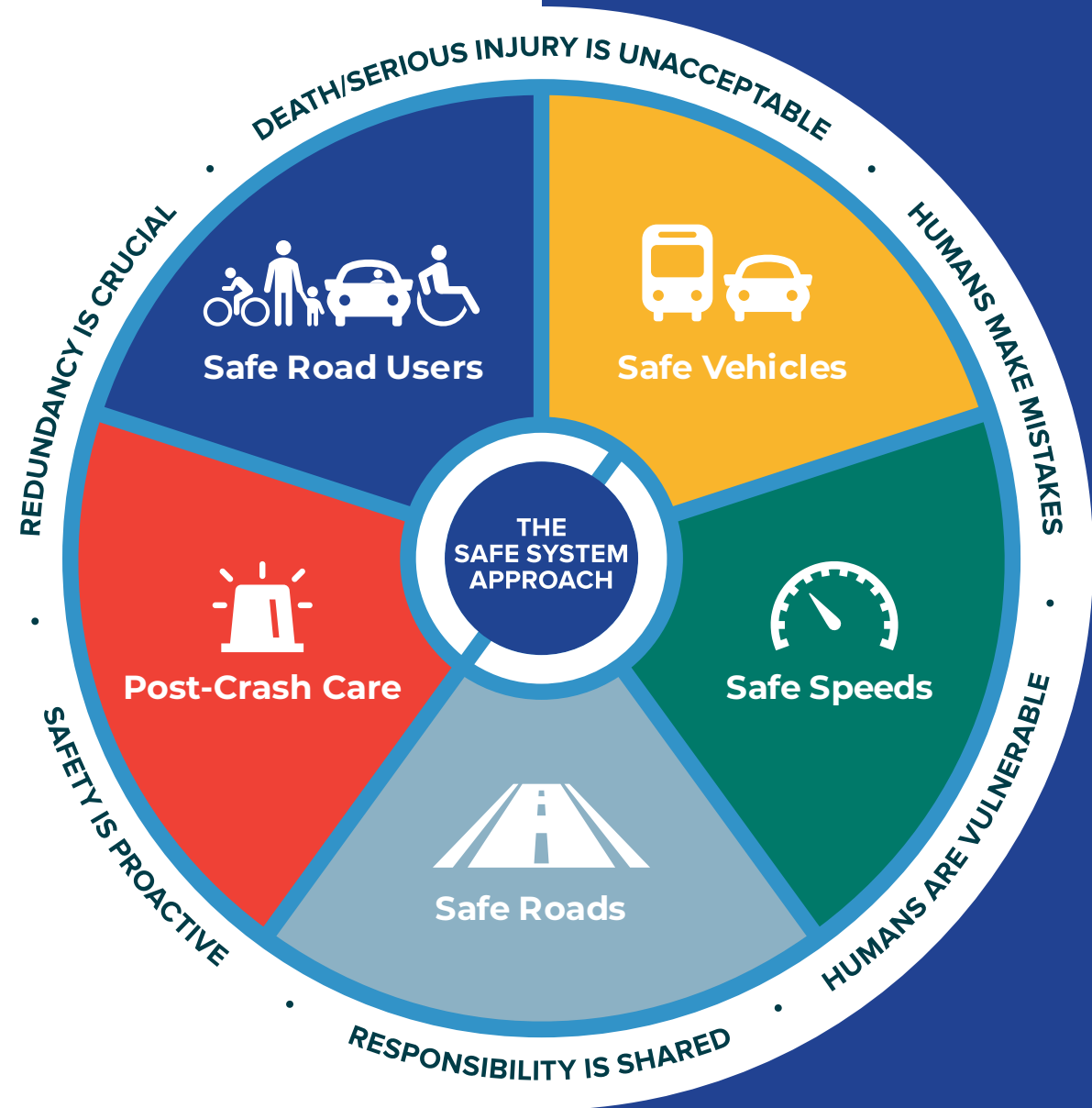


# Responsibility is Shared



- System managers
  - Planners, designers, builders, operators, maintenance workers
- Vehicle manufacturers
- Law enforcement personnel
- Traffic Incident Management personnel
- System users

# The 5 Safe System Elements



# Safe Road Users



Walk



Bike



Drive



Transit

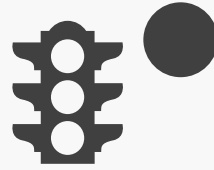


Other

# Safe Road Users – Continued



Not distracted or  
impaired



Follow rules



Act within the limits  
of the road design



# Safe Vehicles



## Active safety

Measures to reduce the chance of a crash occurring

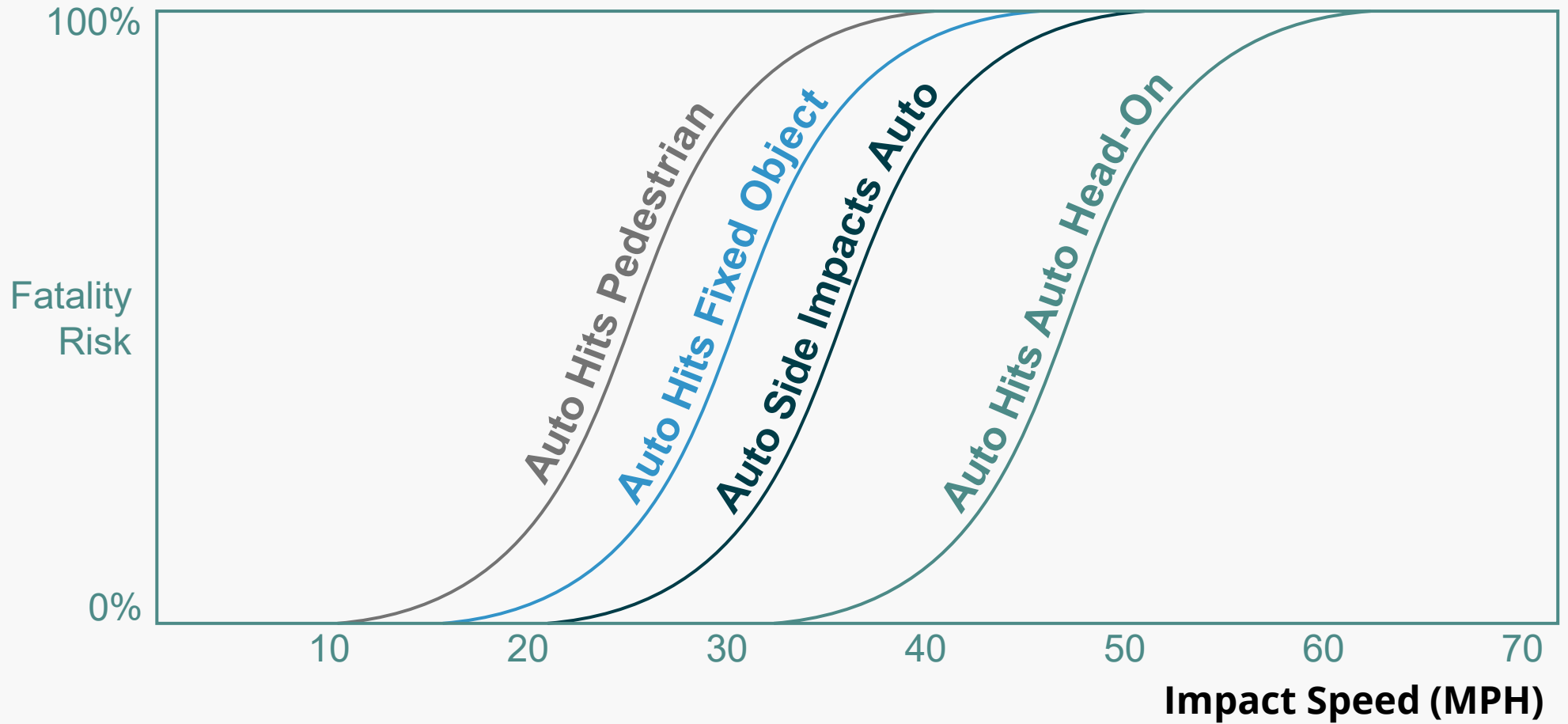
- Lane departure warning
- Autonomous emergency braking

## Passive safety

Protective systems for when crashes do occur

- Seatbelts and airbags
- Crash-absorbing vehicle crumple zones

# Safe Speeds



# Safe Roads



## Avoiding crashes involves:



Separating users in space



Separating users in time



Increasing attentiveness and awareness

# Post-Crash Care



First responders



Crash investigation



Medical care



# NJ SSA - Safe Roads



## Pavement Resurfacing Project

### Location:

NJ Route 26 / Livingston Avenue,  
New Brunswick, Middlesex County

### Improvements

Traffic Signal Including Nackplates

ADA – Pedestrian Ramps

### Pavement Repairs

Bus Lanes

Bicycle Lanes



# NJ SSA - Safe Roads - Continued



## Midblock Crosswalk Improvements

As part of NJDOT's Systematic Plan, all **approved** midblock crosswalks are enhanced



# NJ SSA - Safe Road Users



Implementing Complete Streets Policy



ADA Regulations

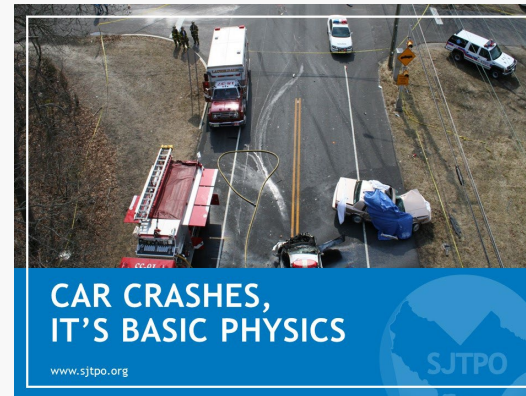
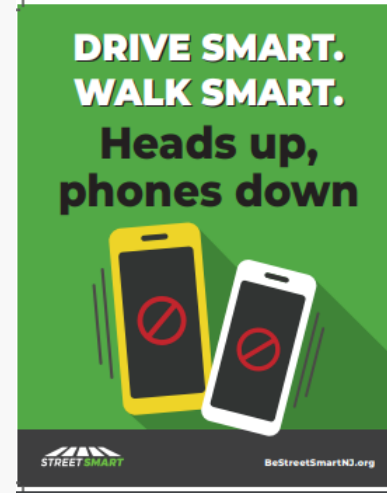


Senate Bill 147 - ASD IDD

# NJ SSA - Safe Road Users - Continued



- Regulations
  - Title 39
  - Move Over Law
  - Safe Passing Law
- Encourage Responsible Behavior
- Enhance Safety Culture
- Education and Awareness





# NJ SSA - Safe Speeds



Roundabout Conversion



Road Diets

# NJ SSA - Safe Speeds



## Speed Enforcement in School Zones



Central Jersey Newspapers

1h · 🌐

The start of a new school year is just a few weeks away and with that we will see an increased number of motorists on New Jersey's roadways. Between hurried school runs, residents returning from vacations, and buses trying to stay on schedule, the pace of activity on our highways, interstates, and local streets will inevitably ramp up.



CENTRALJERSEY.COM

Sponsored: We have to change driver behavior in work zones - it is costing highway workers their lives - centraljersey.com

## Work Zone Safety

**SLOW DOWN, MOVE OVER**

**HELP PROTECT OUR WORKERS**



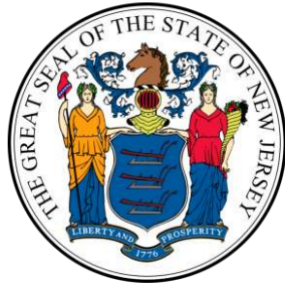
Each day, more than a thousand NJDOT crew members – your family, friends, and neighbors – leave the comfort of their homes to work on New Jersey's roadways. They are trusting you to drive responsibly so they can go home at the end of their shift. Reducing your speed reduces the risk of a crash. Please slow down when you see our crews at work. Together, we can make our roadways safer for everyone.

*Glenn Huntzinger*  
NJDOT Commissioner

# NJ SSA - Post-Crash Care



## State of New Jersey Traffic Incident Management Strategic Plan



Endorsed by the  
New Jersey Statewide TIM Steering Committee  
Date: June 2022



## NJDOT Traffic Incident Management Training



# Safe System Approach Training for New Jersey

- SHSP Priority Action (Intersections and Lane Departure EA)
- Engaging select group of safety champions
- Develop a comprehensive training for all Safety Practitioners
- NJ SSA training will be available in 2024
  - SRC
  - LTAP

# Thank you

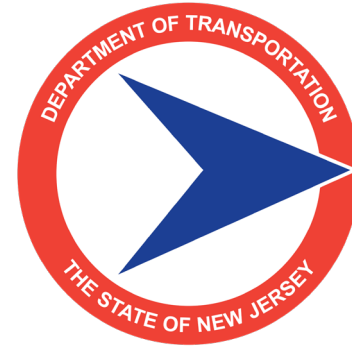
---



U.S. Department  
of Transportation

**Federal Highway  
Administration**

Amy Kaminski  
amy.kaminski@dot.gov



Jeevanjot Singh  
Jeevanjot.Singh@dot.nj.gov