

SAFETY SUMMIT #3

June 19, 2020

NJ 2020 Strategic Highway Safety Plan





Welcoming Remarks
Khalid Shaikh
Project Manager, NJDOT

A photograph of a city street with a green-painted bike lane. The street is lined with multi-story brick buildings. A sign for 'Jail & SPA' is visible on the left. A street sign for 'Montgomery' is visible in the distance. A white utility pole stands in the foreground. The text 'Summit Agenda' and 'Ryan Walsh, FHI' is overlaid in the center of the image.

Summit Agenda

Ryan Walsh, FHI



Welcoming Remarks
Michael Russo
Assistant Commissioner, NJDOT



Welcoming Remarks
Eric Heitmann
Director, NJDHTS



Welcoming Remarks
Diane Gutierrez-Scaccetti
Commissioner, NJDOT



Equity in Highway Safety Investment
Zenobia Fields
Senior Policy and Program Advisor,
NJDOT

Equity Team Liaisons

Intersections

- **Sascha Frimpong, NJTPA, Director of Local Project Development**

Driver Behavior

- **Krishna Murthy, EZ Ride TMA, Executive Director**

Lane Departure

- **Flor Castillo, Pivot Strategies, Former NJ Transit Board Member and United Health Executive**

Equity Team Liaisons

Other Vulnerable Road Users

- **Sangeeta Badlani, Nikhil Badlani Foundation and Youth Advisory Board of West Orange**

Pedestrians and Bicyclists

- **Charles Brown, Rutgers and VTC, Senior Research Specialist and Adjunct Professor**

Data

- **Angela Gonzales, Servicios Latinos de Burlington County, Executive Director**

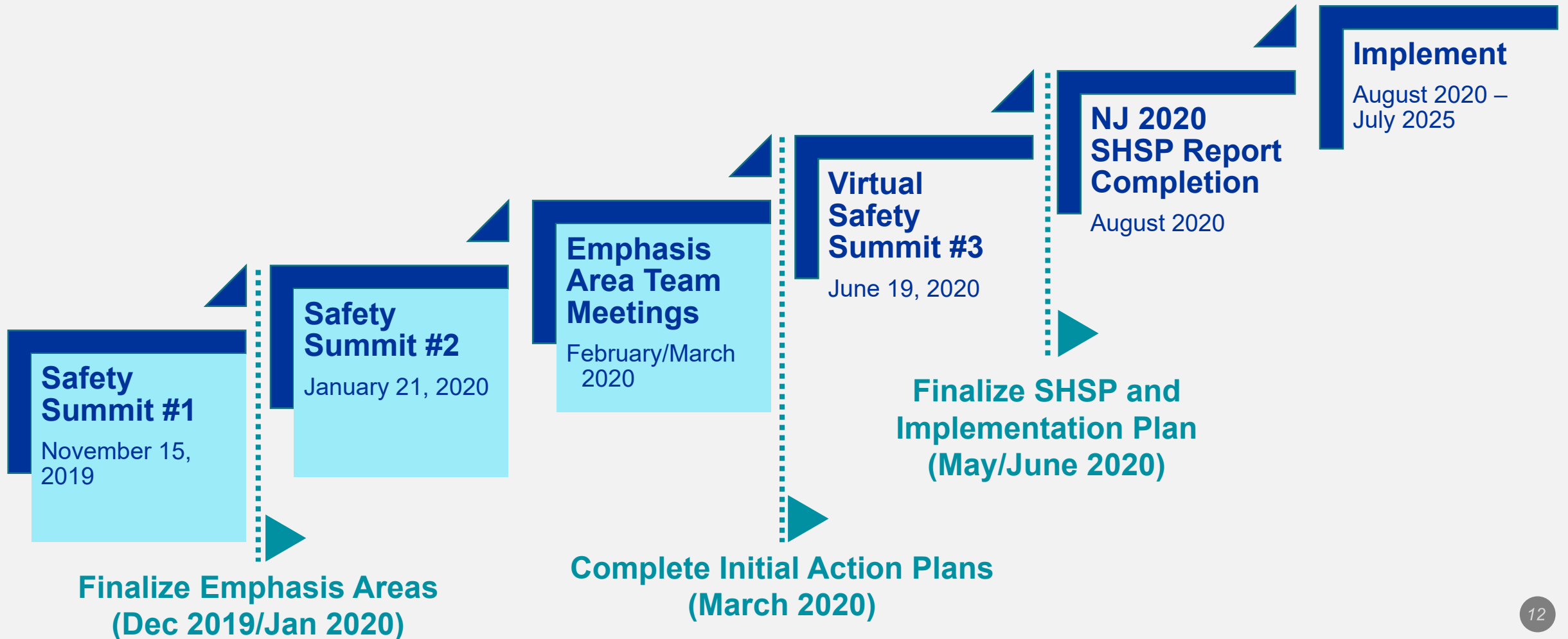
A photograph of a city street with a green-painted bike lane and a blue-painted pedestrian zone. The text "Equity Questions" is overlaid in the center. The background shows multi-story brick buildings, a "Nail & SPA" sign, and a "Montgomery" street sign. A manhole cover is visible in the foreground.

Equity Questions

A photograph of a city street with a green-painted bike lane, overlaid with a semi-transparent white box containing text. The street features a green-painted bike lane with white lane markings and orange dashed lines. A manhole cover is visible in the foreground. In the background, there are multi-story brick buildings, trees, and parked cars. A sign for 'Jail & SPA' is visible on the left building. A street sign for 'Montgomery' is visible in the distance.

Progress to Date
Khalid Shaikh
Project Manager, NJDOT

NJ 2020 SHSP Schedule





Action Plans Overview

Dave Kuhn, GPI



What is an Emphasis Area?

An Emphasis Area is a safety-related focus area which will require:



Goals



Objectives

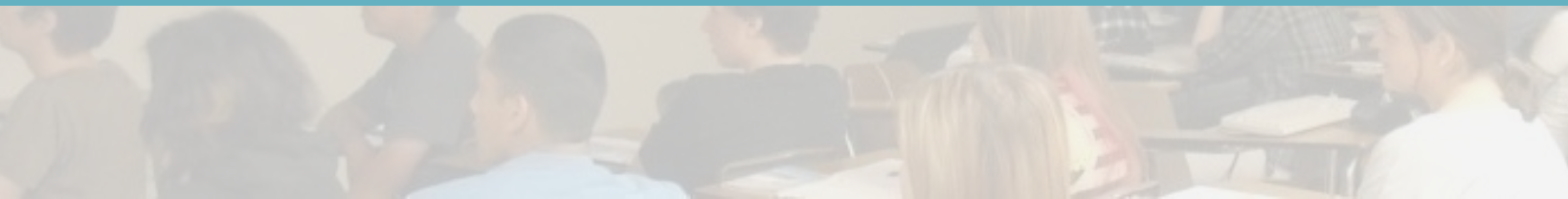


Strategies



Actions

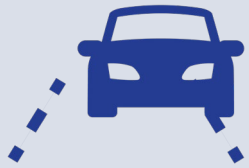
to be achieved over the next five years.



NJ 2020 SHSP Approved Emphasis Areas



Equity



Lane Departure



Intersections



Driver Behavior



Pedestrians and
Bicyclists



Other Vulnerable
Road Users



Data



Lane Departure Action Plan
Vince Cardone, Team Leader
Monmouth County

Lane Departure Action Plan Strategies

- **Ensure/upgrade roadway design standards to facilitate Vehicle to Infrastructure communication**
- **Identify/map high-risk locations on state and county roads**
- **Expand Systemic Improvements Program**
- **Share best practices with all levels of government**
- **Prioritize rural high-crash corridors**
- **Strengthen enforcement**
- **Strengthen education/marketing on best driving practices**



Intersections Action Plan

Kimberly Singleton, Team Leader
City of Newark

Intersection Action Plan Strategies

- **Improve the screening/prioritization of high-risk intersections on state, county and municipal networks**
- **Promote Local Safety Plans**
- **Educate municipalities on the benefits of local road safety audits**
- **Create guidance on proven safety countermeasures**
- **Review the current approach to identify/prioritize high-risk pedestrian intersections**
- **Prioritize right-angle and left-turn crash focus on all networks**
- **Review and consider new or existing laws, regulations, policies related to intersection safety**



Driver Behavior Action Plan

Tracy Noble, Leader

AAA Mid-Atlantic

Driver Behavior Action Plan Strategies

- **Strengthen training for law enforcement**
- **Promote a positive safe driving culture**
- **Increase seat belt usage**
- **Consider how to reduce unlicensed/suspended drivers**
- **Strengthen law enforcement in the judiciary branch**
- **Consider equity in educational materials and public outreach**
- **Implement infrastructure to encourage safe driving behavior
(Recommend deferring to Intersection and Lane Departure Teams)**



Pedestrians and Bicyclists Action Plan

**Elise Bremer-Nei, Team Leader
NJDOT**

Pedestrian and Bicyclist Action Plan Strategies

- Strengthen implementation of Complete Streets at state, county and municipal level
- Consider new and existing Laws, Regulations, Policies to improve pedestrian and bicyclist safety
- Increase education of Students (Elementary through Higher Education), Drivers (Driver Education/Testing improvements) and all Pedestrians and Bicyclists (expanding Street Smart Campaign)
- Consider a quick-response Roadway Safety Audit Program for municipalities with a high rate of pedestrian and bicycle fatalities and serious injuries
- Improve integration of pedestrians and bicyclists safety strategies and initiatives with the NJDHTS Highway Safety Plan
- Improve communication methods between state, county, municipal jurisdictions and the public to improve awareness of planned safety projects
- Increase methods or improve awareness of existing methods for pedestrians and bicyclists to report infrastructure issues on state, county and municipal facilities
- Incorporate best practices for pedestrian and bicycle safety accommodation in developer projects impacting state, county and municipal roads
- Increase enforcement in school zones and crosswalks working with the Other Vulnerable Road Users Team
- Consider and work to address equity issues related to pedestrian and bicyclist crashes
- Increase awareness of infrastructure grant opportunities and consider grant expenditure performance




Other Vulnerable Road Users Action Plan

Andy Anderson, Team Leader
NJ Bike and Walk Coalition

Other Vulnerable Road Users Action Plan Strategies

- **Improve infrastructure, education and travel choices for Mature Drivers**
- **Improve education, laws/regulations, enforcement and alternate travel choices for Younger Drivers**
- **Improve education/training for Motorcyclists and promotion of USDOT approved helmets/high-visibility clothing**
- **Improve education, laws/regulations/policies and infrastructure to protect workers in Work Zones**
- **Increase education of crossing guards and drivers related to School Zone Safety**
- **Increase education of first responders related to Incident Management**



Data Action Plan

Layla Fryc, Team Leader
NJ Turnpike Authority

Data Action Plan Strategies

- **Improve crash reporting process – Completeness, Timeliness, Accuracy, Uniformity, Integration with other systems**
- **Increase data accessibility (NJOIT Open Data Portal, Safety Data Resource Center, Web Dashboard)**
- **Create a Pedestrian and Bicycle Infrastructure and Volumes database (Coordination with Pedestrians and Bicyclists Team)**
- **Incorporate all public roads into the Straight-Line Diagram**
- **Standardize data collection amongst agencies across the state**
- **Incorporate health care data in safety analyses**
- **Improve identification and Map Environmental Justice Communities and Communities of Concern in relation to safety data**
- **Research factors leading to overrepresentation of fatal and serious injury crashes in Environmental Justice Communities**
- **Improve consistency of data reporting by agencies at all levels: state, regional, counties, municipalities**



Equity Action Plan Next Steps
Zenobia Fields, Team Leader
NJDOT

Equity Action Plan Next Steps

Hold Initial Equity Emphasis Area Team Meeting by mid-July

- Review goals and objectives of each emphasis area for potential impact on underserved
- Identify priority equity strategies to be pursued over the next five years
- Recommend any additional actions to be pursued

Equity Action Plan Next Steps

Liaisons to attend other Emphasis Area Team Meetings

Equity Team to report quarterly on progress

Equity representative(s) will be designated for the Executive Committee

A photograph of a city street featuring a green-painted bike lane. The bike lane is separated from the road by white bollards and has white directional arrows and the word 'bicycle' painted on it. The background shows multi-story brick buildings, including one with a 'Nail & SPA' sign, and several cars parked along the street. The text 'Action Plans Questions' is overlaid in a large, bold, blue font across the center of the image.

Action Plans Questions



Implementation Overview / Next Steps

Dave Kuhn, GPI

Overall SHSP Implementation Plan

Two components:

1. Action Plan Implementation

2. Annual SHSP Evaluation

Action Plan Implementation

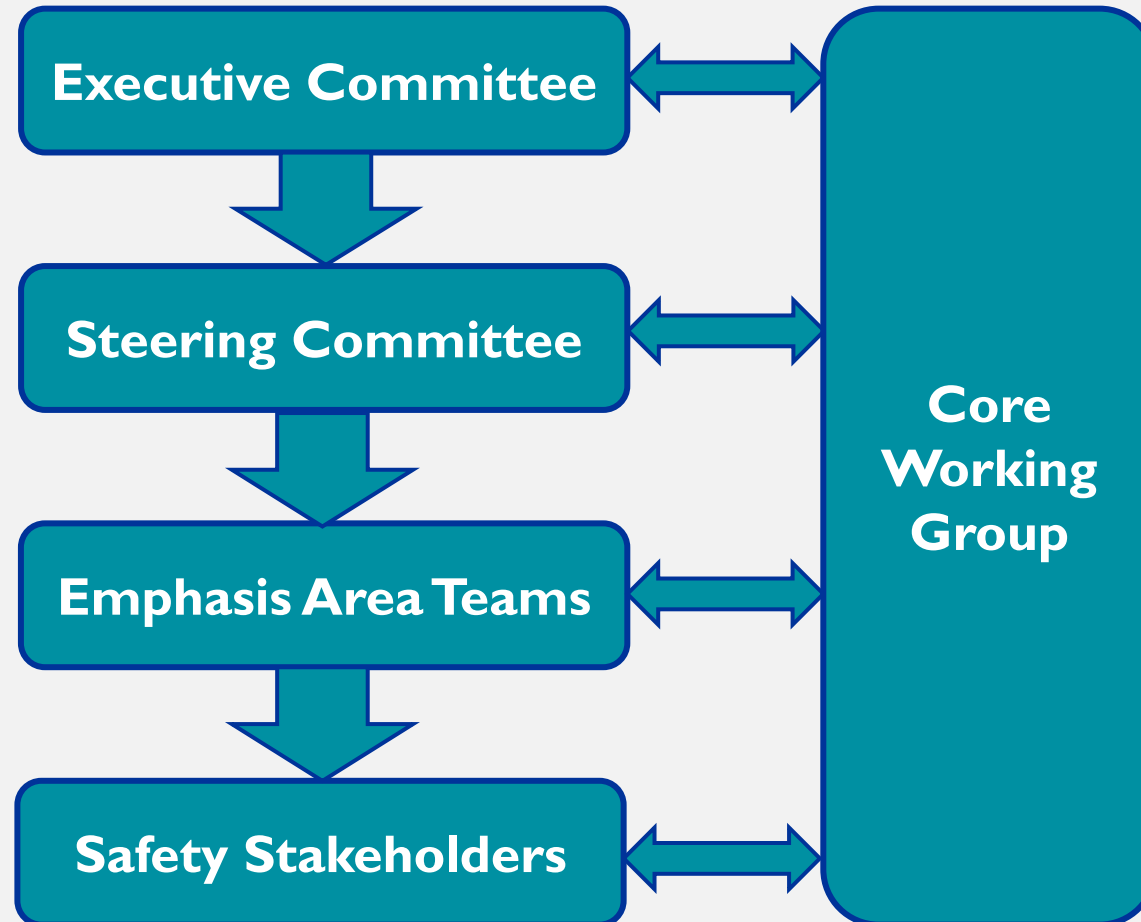
- **5-year Implementation Period**
- **Quarterly Monitoring and Reporting by Emphasis Area Teams**
- **Quarterly Steering Committee Meetings or Progress Briefings**
- **Action Plan Change Management Process**

Annual SHSP Evaluation

Periodic High-Level Assessment of the SHSP

- **Assess progress toward goals and objectives**
- **Assess how the implementation process is working**
- **Identify opportunities for improvement**
- **Major process changes to be brought before the Executive Committee for approval**

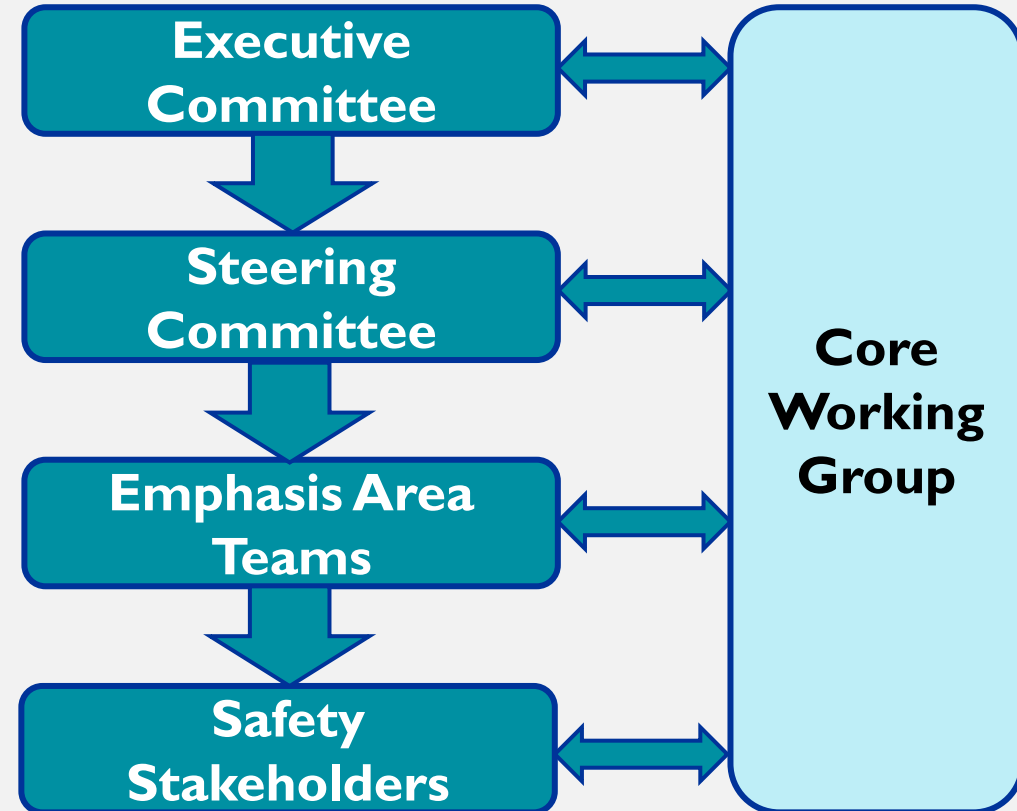
SHSP Organizational Structure



SHSP Implementation and Evaluation Roles

Core Working Group

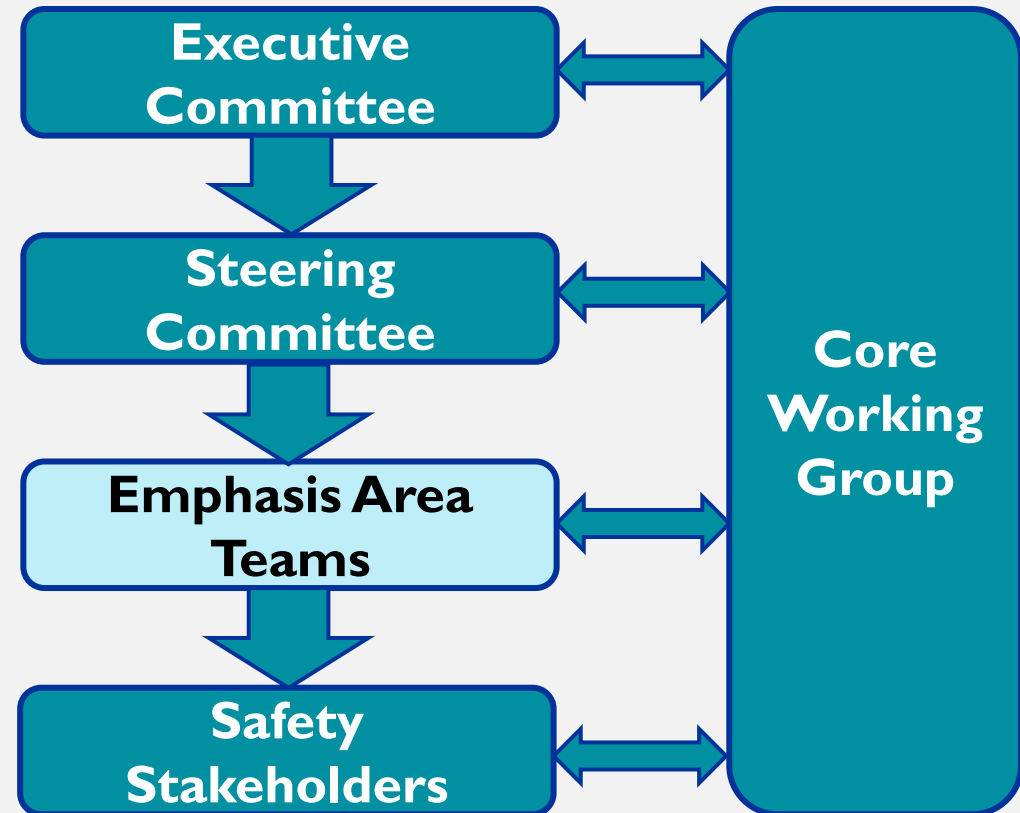
- Manage Tracking and Reporting
- Oversee Change Management Process
- Conduct Annual Evaluation Process



SHSP Implementation and Evaluation Roles

Emphasis Area Teams

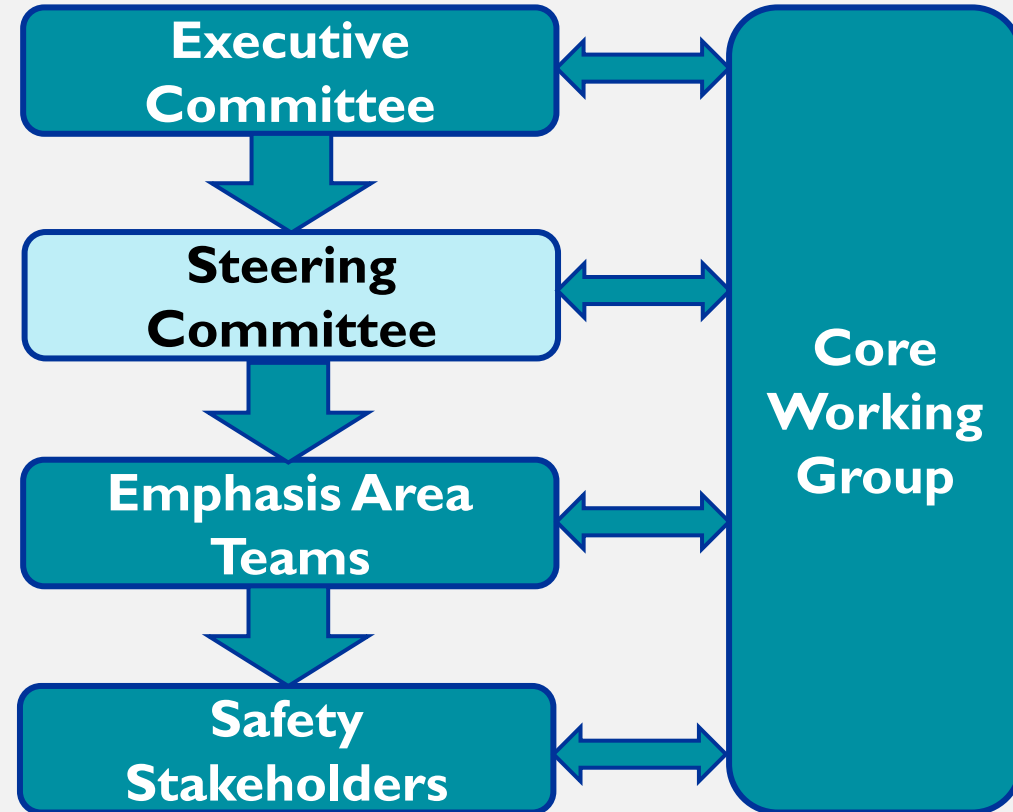
- Report on progress
- Raise change issues, potential roadblocks, mitigation actions
- Participate in Evaluation Process



SHSP Implementation and Evaluation Roles

Steering Committee

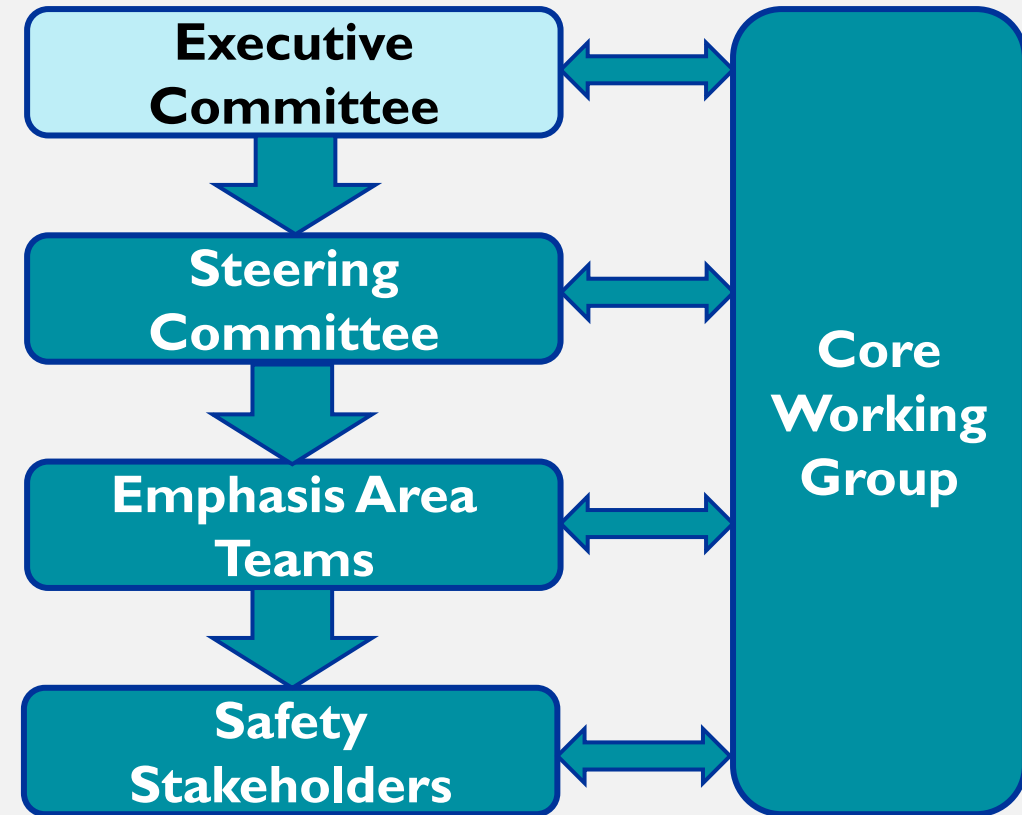
- Quarterly review of progress/issues
- Participate in Annual Evaluation Process



SHSP Implementation and Evaluation Roles

Executive Committee

- Approval of major changes to Action Plans.
- Assist in clearing roadblocks.
- Approve major process changes



Implementation Next Steps


- **First Quarterly Emphasis Area Team Meetings – August/September 2020**
- **First Quarterly Steering Committee Meeting – September/October 2020**
- **First Evaluation Process – Begins Spring 2021**



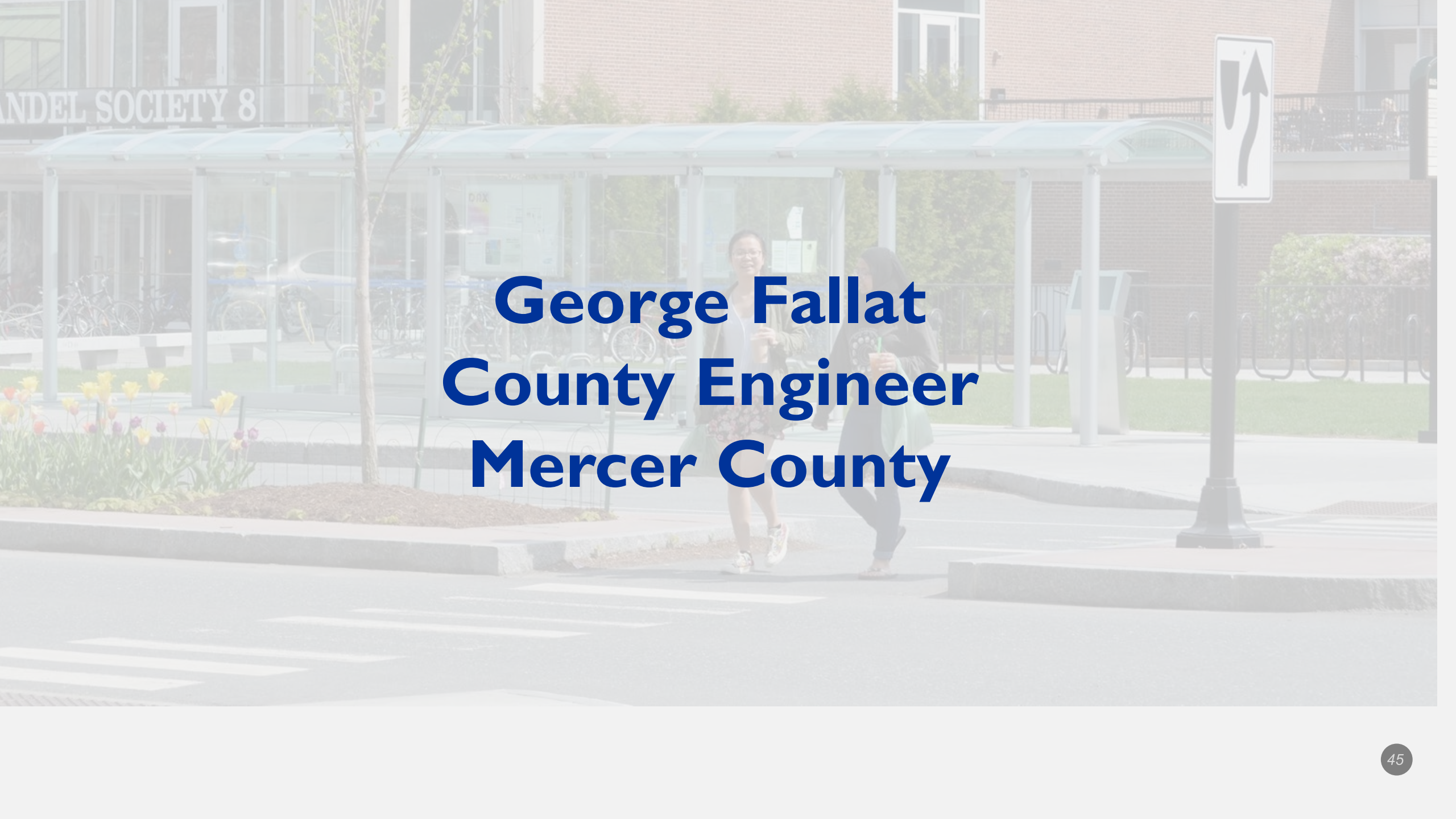
Implementation / Next Steps Questions



Safety Partners
Michael Russo
Assistant Commissioner, NJDOT



Robert Clark
Administrator
FHWA-NJ

A background image showing a bus stop with a glass shelter and a signpost. Two women are walking past the bus stop. The text 'George Fallat County Engineer Mercer County' is overlaid in the center.

**George Fallat
County Engineer
Mercer County**

The background image shows a street scene with a bus stop shelter. Two women are walking across a crosswalk in the foreground. In the background, there is a brick building with a sign that reads "MANDEL SOCIETY 8". A street sign on the right indicates a right turn. The text is overlaid in a large, bold, blue font.

**Lt. Christopher Guenther
Traffic Bureau Commander
Linden Police Department**



Closing Remarks
Michael Russo
Assistant Commissioner, NJDOT